

Train Wreck

A reservoir of good will goes a long way...



Your delivery will be a little late...



Oooops!



\$3.3 Million worth of new cars were not available for delivery on time!

However; the Engineer and Conductor of the train were exonerated and free of any responsibility for the crash.

Equipment failure in the track was found to be the culprit for the accident.



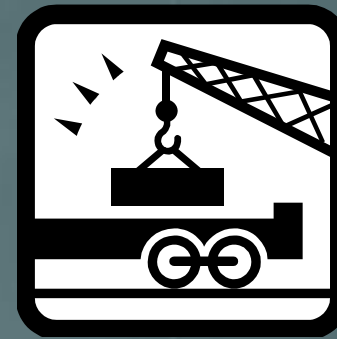
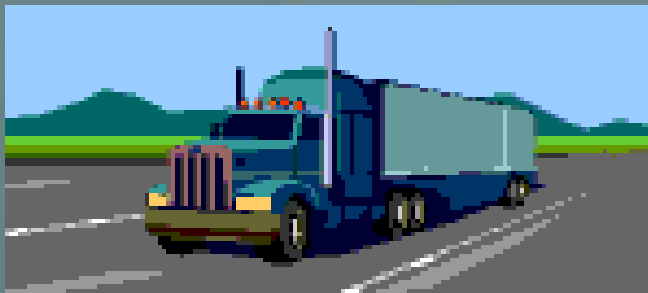
Why should you care?

- The Engineer has since been honored for his handling of the loss by the naming of the area as “**area 51**” due to the significant loss of equipment, but no loss of life in spite of the odds.
- His unblemished record served as his reservoir of “good will”*along with the little black box!*



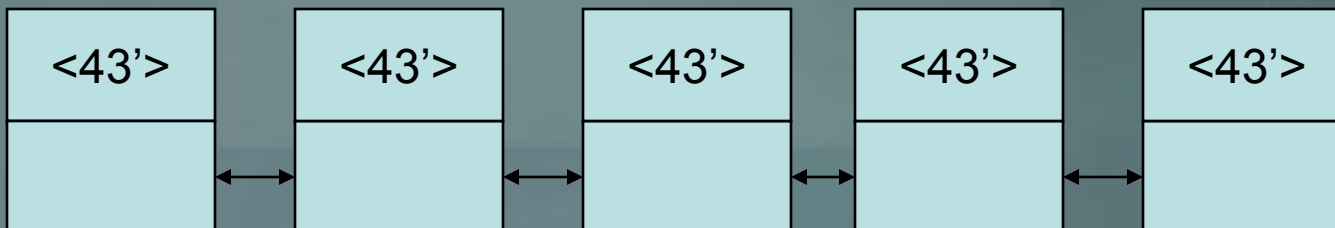
Who really cares?

- Here's some of the background
 - This type of train consisted of all intermodals. (container carrying equipment like the containers you see on ships)
- Multi-platform Equipment Car Types are broken down into 2 main categories
 - Articulated-cars with multiple units (segments) that are connected with an articulated coupling and share a common truck (set of wheels).
 - Non-articulated which refers to cars with multiple units that are connected with solid drawbars.



Trains

- There are many types of Articulated/Non-Articulated cars that can have from 1 to 5 segments.
- Articulated Car Spine Cars are qualified for 70mph if they have at least one load and are good for 70mph loaded or empty.
- Non-Articulated car types are restricted to 55 unless there is a load in each well or segment.



Trains and training....

- The truck's (wheels) will "hunt" the rail, therefore, the speed of the train is reduced to 55mph maximum...
 - so the conductor must determine from the train list if the train is qualified for 70/55mph.



Derailed!

- In the train that derailed, there were two Articulated Cars that were not loaded.
 - That's OK, *it's good for 70mph.*
 - If the conductor made a mistake and they were Non-Articulated, the Engineer would have been pulled out of service and his Engineer's License would have been suspended.
- The top speed that day *was 68mph*
 - The derailment occurred *at 62mph.*



According to the Engineer...

- the lesson is to operate these trains (*which by the way are the largest moving land based vehicles on the planet*) within the established guidelines
- It is also motivating to realize that below and to the rear of the engineer's location in the locomotive is a fuel tank with as much as 5,000 gallons of diesel fuel, which is flammable!



Errors can cost more than \$\$\$

- Operating unit trains (*all one car type*)
 - loaded entirely with ethanol...propane...
 - mistakes are not acceptable and the consequences could be devastating
 - the cost of 1 GE locomotive is \$1.8 million
 - The rail cars are expensive
 - the track
 - the lading (*type of freight*)
 - labor



The response:

- The Engineer and Conductor were considered “not at fault” even before the “little black box” could be found and inspected.
 - Why?
 - Honesty
 - Veracity
 - Integrity



Veracity and Honesty

- Veracity
 - *Here's a new term for you!*
 - *Devotion to truth*
 - *Conformity with fact: accuracy*
 - *Something true*

It also has to do with respect for others and one self, and telling them the truth about a situation.

- Honesty
 - *To be honest is to be free from deception*
 - *Truthful*
 - *Reputable*



So what does that mean to you?

- How would you react if you heard that when asked, your employer stated that you were
 - “not the most veracious employee that he or she had ever encountered but that you were OK?”



So what does that mean to you?

- What do you think could give someone else the impression that you were not “honest” even if you never lied to them?
 - Do you....
 - Follow through?
 - Follow the rules?
 - Do what you say you are going to do?
 - Arrive on time, early or late?
 - Leave on time, early or late?



Integrity

- What would it mean to you if someone said that your integrity was questionable? And what would you do about it?
 - Would you:
 - Know that they were wrong, not care about it and ignore it.
 - Wonder where the impression came from and work to improve it.
 - Chalk up their impression to jealousy and move on.
 - Chalk it up to prejudice and move on.



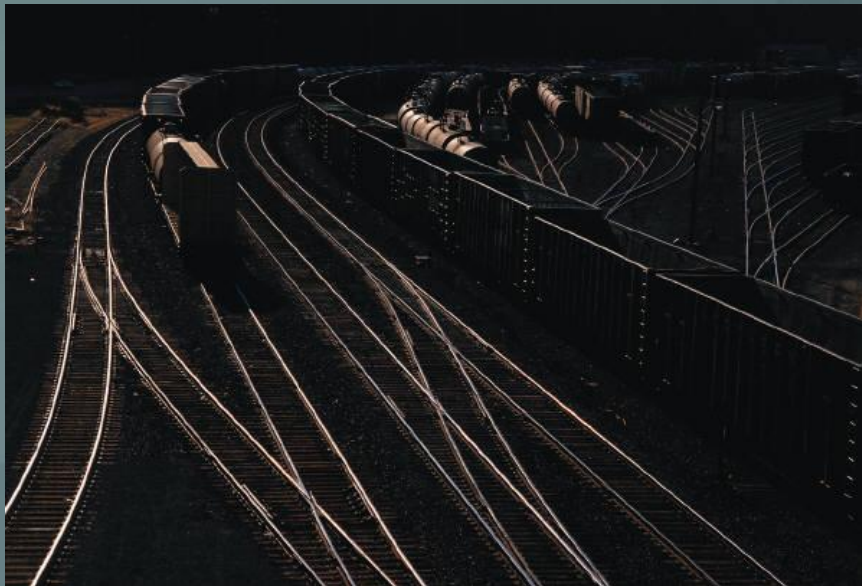
Let's talk about it...

- What do you think would have happened to the Engineer if his honesty and integrity were questionable?
 - Why?
 - Would he have any “recourse?”



Derailments can be prevented

- Although you might have thought that you couldn't learn from a train wreck, I hope that you have gained some insight about yourself. Your reputation can derail your career if you let it.



Special thanks to PB for sharing *his true story* and to BNSF railroad.
If you had ordered one of these BMWs, I would want to check it for
scratches and a little extra sand in the passenger compartment.
Wouldn't you?

